

Pearl St Planet Walk

Use QR code for more detailed digital guide

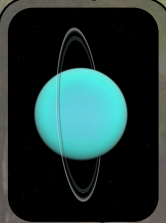
Planet Walk West

Other Side of the Sun (Bike/Drive Recommended) East



Rest of the planets "on the other side of the sun" (East, Bike/Drive recommended) If you stay on the trail and go under the bridge that lets you safely cross canyon ave you will find yourself on a creek path. You can go with the flow of the river to take a different more scenic way back to the heart of boulder where you started

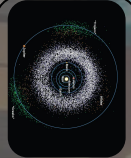
JUPITER (Stand-In)
Location: Crossing Broadway (~0.2 mi)
Real Diameter: ~86,881 miles
Scale Diameter: ~6.8 mm (small marble)
Quick Facts: Largest planet; ~9.9-hour day.



URANUS
Location: The People's Crossing (~0.98-1.0 mi)
Real Diameter: ~31,518 miles
Scale Diameter: ~2.5 mm
Quick Facts: Tilted on its side; unusual seasons.



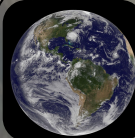
SATURN
Location: Trident Booksellers & Cafe (~0.48-0.51 mi)
Real Diameter: ~72,367 miles
Scale Diameter: ~5.7 mm
Quick Facts: Iconic rings; could float in water.



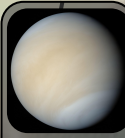
ASTEROID BELT
Location: Near Boulder County Courthouse (~0.11-0.16 mi)
Quick Facts: Rocky remnants of early Solar System; countless small bodies.



MARS
Location: Into The Wind (~0.08 mi)
Real Diameter: ~6,779 miles
Scale Diameter: ~0.53 mm
Quick Facts: Red Planet; largest volcano (Olympus Mons).



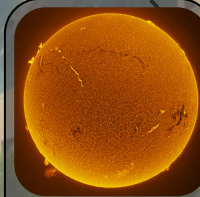
EARTH
Location: Liberty Puzzles (~0.05 mi)
Real Diameter: ~12,700 miles
Scale Diameter: ~1 mm (grain of sand)
Quick Facts: Only known planet with life.



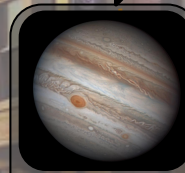
VENUS
Location: Stio (~0.04 mi)
Real Diameter: ~7,520 miles
Scale Diameter: ~0.59 mm
Quick Facts: Hottest planet; spins backwards.



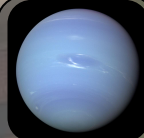
MERCURY
Location: PosterScene (~0.02 mi from Sun)
Real Diameter: ~3,032 miles
Scale Diameter: ~0.24 mm (poppy seed)
Quick Facts: No moons; extreme hot/cold swings.



SUN
Location: Mountain Sun Brewing (0 mi)
Real Diameter: ~865,000 miles
Scale Diameter: ~68 mm (small grapefruit)
Quick Facts: G-type main-sequence star ("yellow dwarf")



JUPITER
Location: Phil Lewis Art Gallery (~0.28 mi from Sun)
Real Diameter: ~86,881 miles
Scale Diameter: ~6.8 mm
Quick Facts: Colorful swirling bands; 79+ moons.



NEPTUNE
Location: Junkyard Social Club (~1.50-1.60 mi)
Real Diameter: ~30,599 miles
Scale Diameter: ~2.4 mm
Quick Facts: Farthest major planet; supersonic winds.



PLUTO
Location: Liberty Puzzles (~2.0 mi)
Real Diameter: ~1,477 miles
Scale Diameter: ~0.12 mm
Quick Facts: Dwarf planet

Pearl Street Planet Walk:

1. **Follow the planets in order.** Each stop lists the "distance," you walked and its space equivalent so you can get a feel for the scale of the solar system. (starting from the Sun is recommended but not necessary)
2. **Scan the QR Code or visit [AstroTours.org/walk](https://www.astro tours.org/walk)** for a detailed digital guide, extra fun facts, and bonus stops.
3. **Enjoy the Journey** at your own pace! The inner planets are a quick stroll on Pearl Street; the outer planets (beyond Saturn) may require a bike or car.
4. **See the Real Planets Up Close:** Want to look through a telescope? Check out [AstroTours.org](https://www.astro tours.org) for local stargazing events, just outside Boulder.

Remember: Each planet's distance is based on its orbit around the Sun—so the real Solar System changes constantly. This walk is just a fun-scale snapshot of our cosmic neighborhood. Safe travels!

